

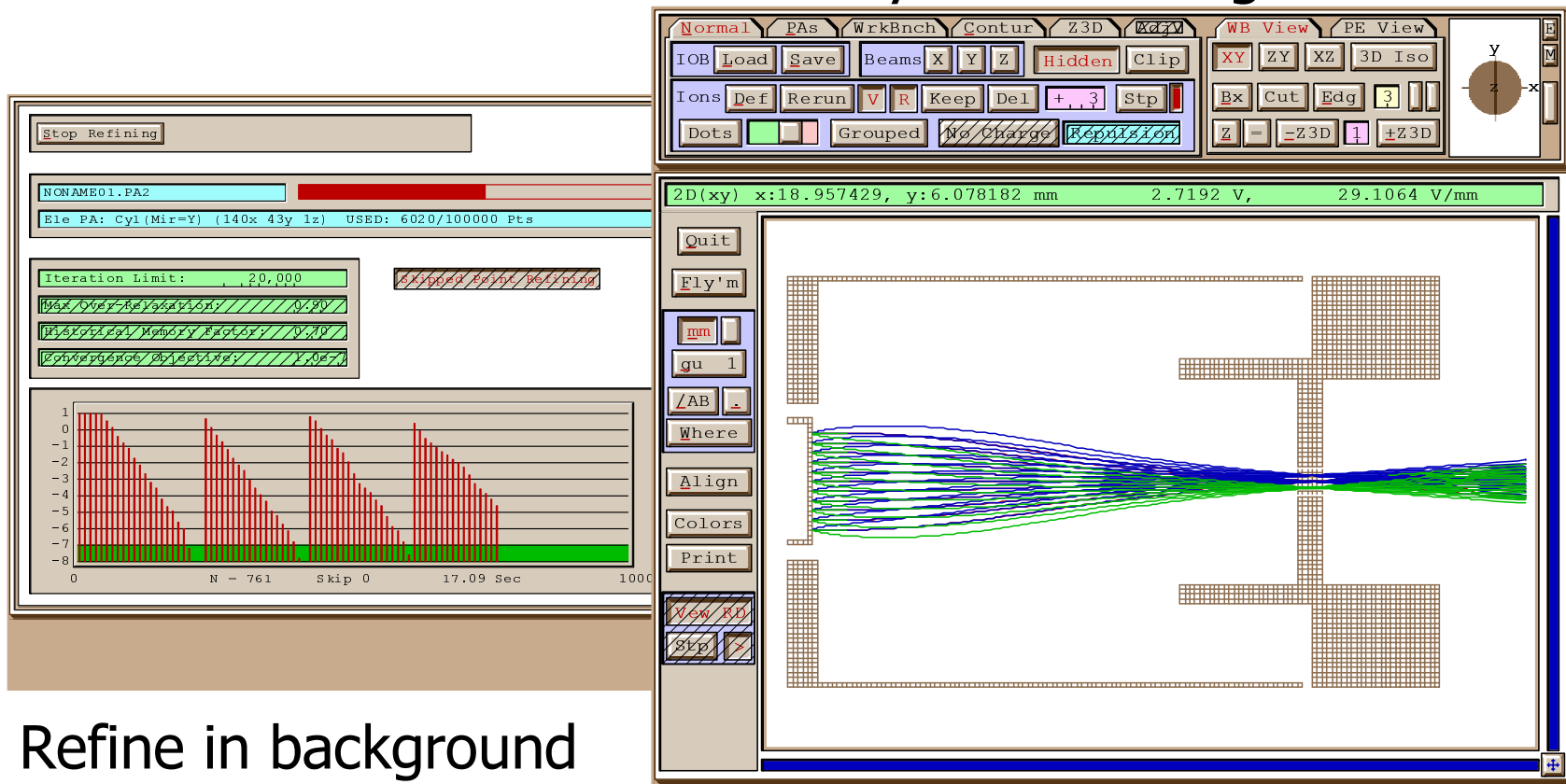
## 2. SIMION 7.0 New Features

- Window gymnastics
  - Uses Windows display drivers and video accelerator boards
  - Activate window - cursor changes, underlines appear
  - resize for printing
  - multiple windows can be open (multiple processors)
- File loading with IOBs
  - auto-load saved/kept trajectories, voltages, scaling, data recording, etc
- Asymmetric scaling
- Where – Absolute/relative distances (x,y,z,r)
- Potential Array size
  - 50 M point arrays (500 MB)
  - address 2 GB of memory (current processor limit)



# Multiple Windows

Fly ions in foreground

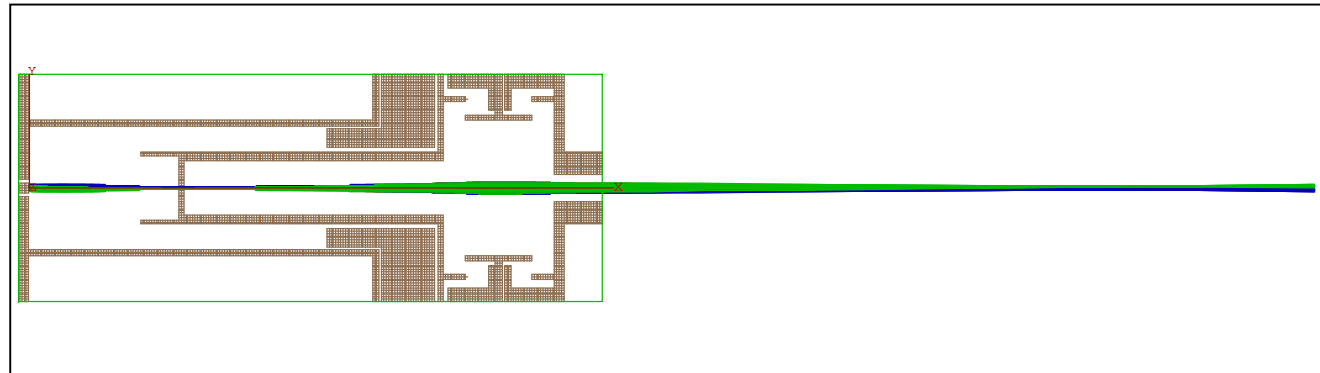


Refine in background

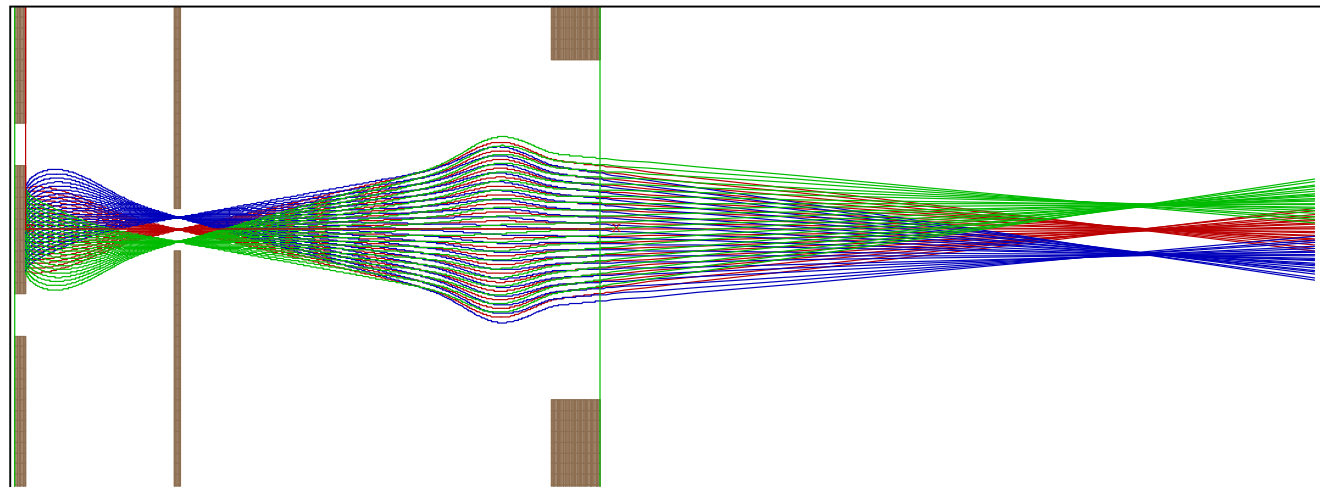


# Asymmetric Scaling

Equal X  
and Y



Zoomed Y  
same X



# SIMION 7.0 New Features

- Read/Write Arrays within User Programs
  - up to 200 arrays allowed
  - array size limited only by virtual memory
  - load/save data to ASCII files
- Additional commands in Geometry Files
  - more precise within and notin commands
- Printing and annotations
  - Any Windows compatible printer
  - output to Clipboard
  - output to Enhanced Metafiles
  - Windows Metafiles
  - Scalable True Type fonts in annotations
  - Dimensions and arrows

