

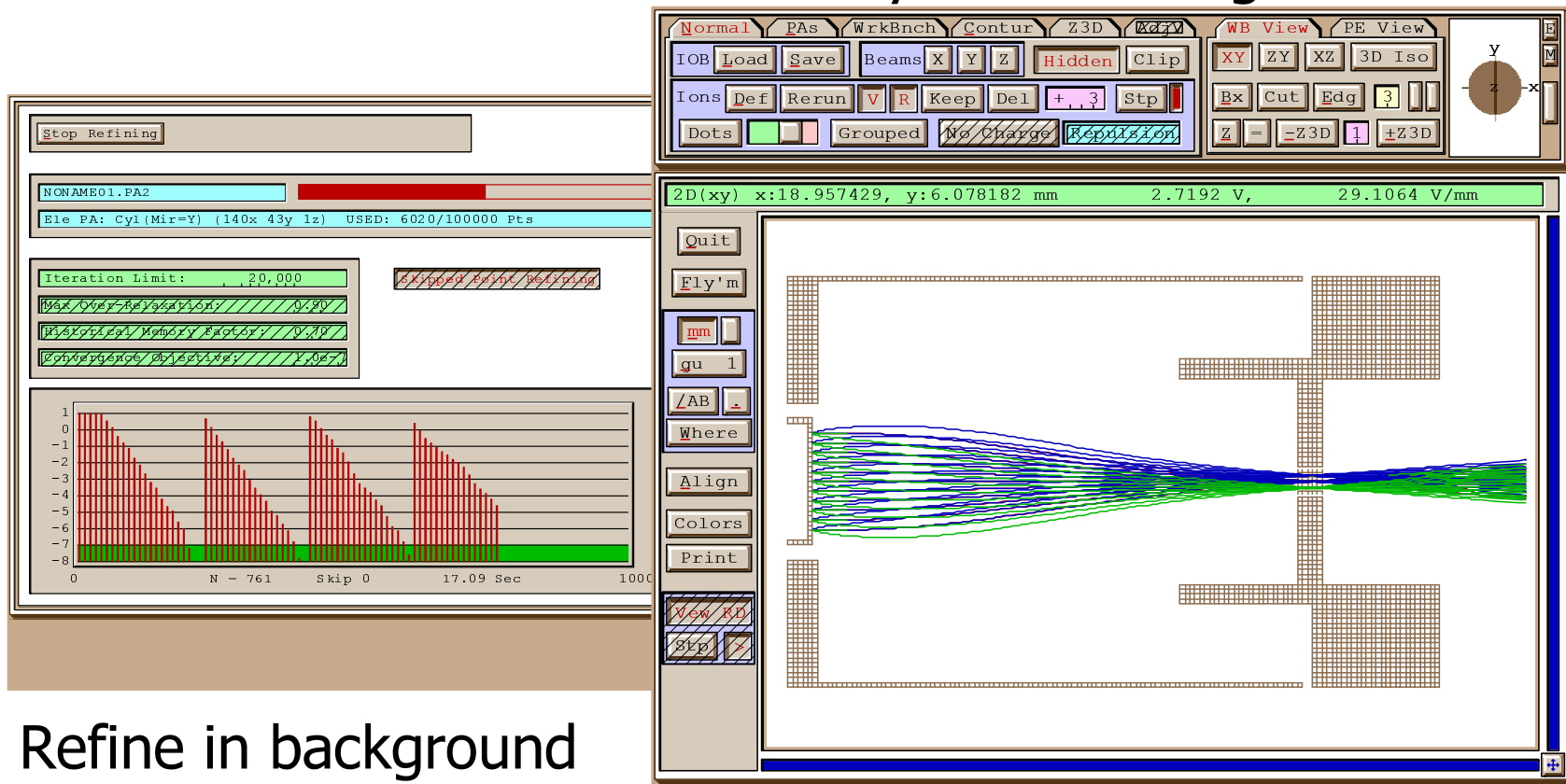
2. SIMION 7.0 New Features

- Window gymnastics
 - Uses Windows display drivers and video accelerator boards
 - Activate window - cursor changes, underlines appear
 - resize for printing
 - multiple windows can be open (multiple processors)
- File loading with IOBs
 - auto-load saved/kept trajectories, voltages, scaling, data recording, etc
- Asymmetric scaling
- Where – Absolute/relative distances (x,y,z,r)
- Potential Array size
 - 50 M point arrays (500 MB)
 - address 2 GB of memory (current processor limit)



Multiple Windows

Fly ions in foreground

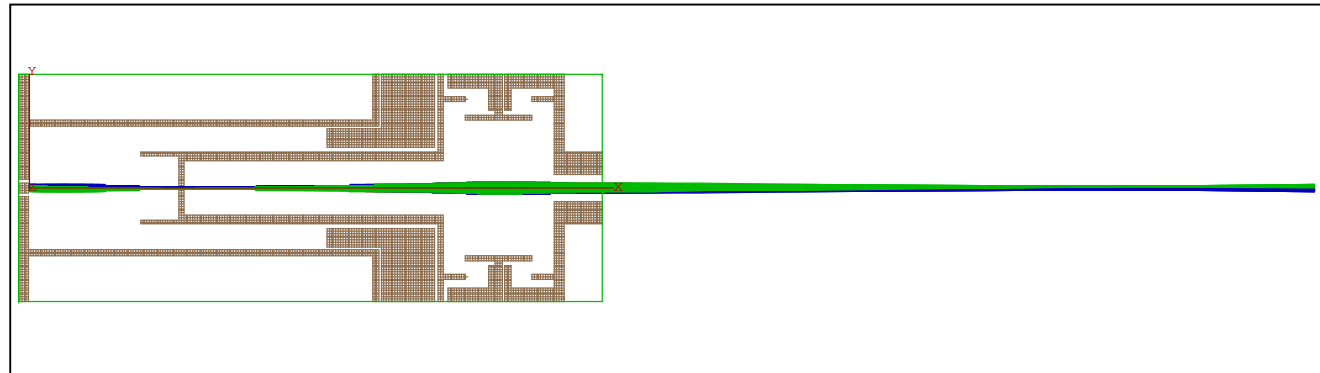


Refine in background

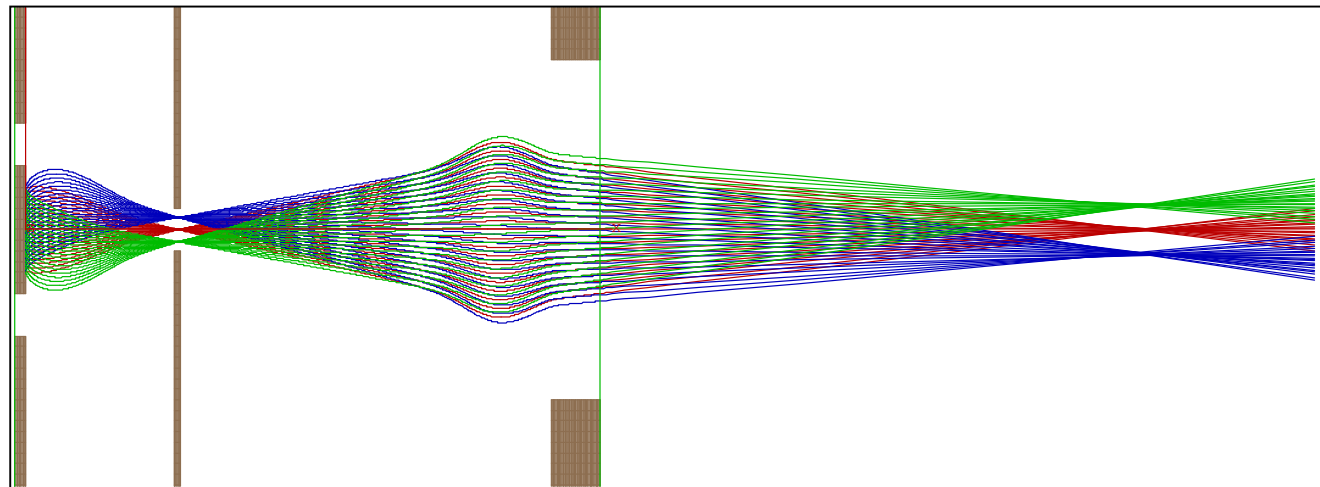


Asymmetric Scaling

Equal X
and Y



Zoomed Y
same X



SIMION 7.0 New Features

- Read/Write Arrays within User Programs
 - up to 200 arrays allowed
 - array size limited only by virtual memory
 - load/save data to ASCII files
- Additional commands in Geometry Files
 - more precise within and notin commands
- Printing and annotations
 - Any Windows compatible printer
 - output to Clipboard
 - output to Enhanced Metafiles
 - Windows Metafiles
 - Scalable True Type fonts in annotations
 - Dimensions and arrows

