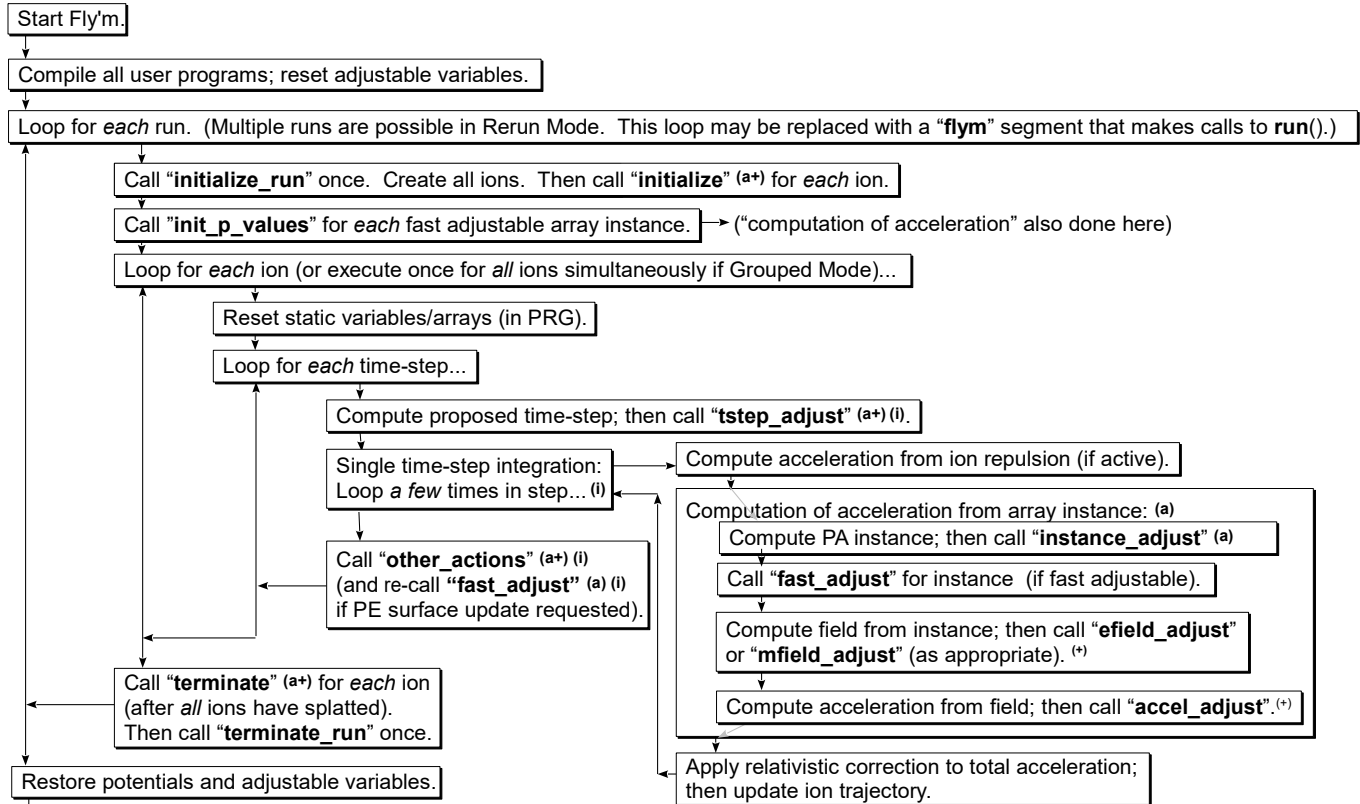


# Flow Diagram of SIMION Trajectory Calculations with Locations of User Program Segment Calls



(a) These are repeated for *each* active array instance (highest priority instance containing the current ion): first the active electrostatic array (if any), then the active magnetic array (if any). That is 0, 1, or 2 times.

(\*) If no active array instance and `sim_segment_global=1`, then call within workbench. That is 1 time. (SIMION 8.2 only)

(i) These are repeated for *each* ion currently being processed. That is one ion or (if Grouped Mode) all ions.